



Lenovo Audio

Lenovo™

TWS

Series	Model	BT and Chipset Version	Bluetooth Profiles	LENOVO EQ Technology	Playtime	Connectivity	Sensitivity	Waterproof	TWS	Dual Mic	Charging	Charging Case mAh
1	HT10	BT5.0, QCC3020	aptX/HSP/ HFP/ AVRCP/A2DP	Y	8*6H	>=10M	105dB	IPX5	Y	Y	Micro USB	800
2	HT20	BT5.0,RK	HSP/ HFP/ AVRCP/A2DP	Y	5*4H	>=10M	98dB	IPX5	Y	Y	Micro USB	500
3	HT30	BT5.0	HSP/ HFP/ AVRCP/A2DP	N	4*4H	>=10M	91dB	IPX5	Y	Y	Micro USB	300
4	HT60	BT5.0, JL6936D	HSP/ HFP/ AVRCP/A2DP	Y	6*5H	>=10M	103db	IPX5	Y	Y	USB - C	600

TWS HT10

Waterproof stereo sound dual microphone headset with magnetic charging case. Built-in microphone in each earbud, stereo hand-free calls with ergonomic design and comfortable to wear.



Selling Points

- Qualcomm QCC3020 Chipset , Support aptX Audio
- 48(8*6) hours Playing time
- Excellent Compatibility with Bluetooth 5.0 and 10M range
- Dual EQ, Support Extra Bass mode & Standard Mode
- Support SIRI voice function

8 HOURS
PLAYING TIME




Lenovo

HT10

SPECIFICATIONS

- Bluetooth Version: 5.0 QCC3020 Chipset
- Support HFP, HSP, AVRCP, aptX
- Range: >=10M
- Battery Capacity: 60 mAh*2
- Earbuds: 60 mAh each
- Charging Case: 800mAh
- Playing time: Around 8 hours
- Standby time: 120H
- Voice Assistant: Siri


LENOVO EQ
TECHNOLOGY



EXTRA BASS &
PURE MUSIC


SIRI & VOICE
CONTROL


QUALCOMM APTX


BT 5.0 WITH
10M DISTANCE

IPX5
SWEAT & WATER
RESISTANT


8H PLAYING TIME
120H STAND BY


DUAL
MICROPHONE


PERFECT
FIT GEL TIPS



Lenovo

TWS HT20

Waterproof stereo sound dual microphone headset with magnetic charging case. Built-in microphone in each earbud supporting stereo hand-free Calling. Ergonomic and comfortable design



Selling Points

- Dual EQ, Support Extra Bass mode& Standard Mode
- 5 hours Playing time with 120H standby time
- Excellent Compatibility with Bluetooth 5.0
- IPX5 Sweat & Water-resistant




HT20

SPECIFICATIONS


- Bluetooth Version: 5.0
- Support HFP, HSP, AVRCP
- Range: >=10M
- Battery Capacity: 60 mAh*2
- Earbuds: 60mAh each
- Charging Case: 500mAh
- Playing time: 5 hours
- Standby time: 120H


LENOVO EQ
TECHNOLOGY


EXTRA BASS &
PURE MUSIC


BT 5.0 WITH
10M DISTANCE

IPX5
SWEAT & WATER
RESISTANT


5H PLAYING TIME
120H STANDBY


DUAL
MICROPHONE

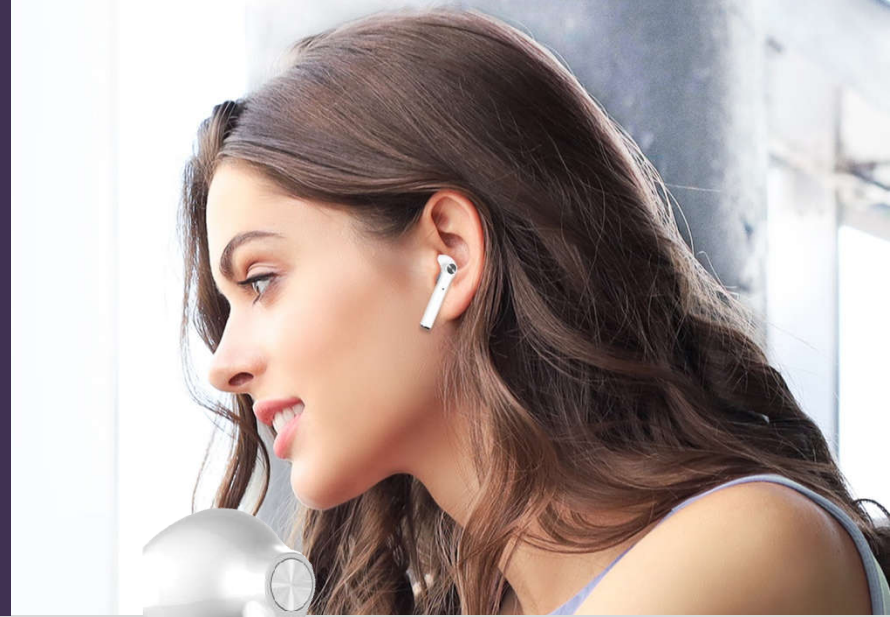

TOUCH
CONTROL


PERFECT
FIT GEL TIPS



TWS HT30

Waterproof stereo sound dual microphone headset with magnetic charging case. Built-in microphone in each earbud supporting stereo hand-free calling. Ergonomic and comfortable design.



Selling Points

- Lenovo Extra Bass Technology
- 20(4*5) hours Playing time with 25H standby time
- Excellent Compatibility with Bluetooth 5.0
- IPX5 Sweat & Water-resistant



HT30

SPECIFICATIONS

- Bluetooth Version: 5.0
- Support AVRCP 1.3, GAVDP 1.3, AVDTP 1.2, A2DP 1.2
- Range: $\geq 10M$
- Battery Capacity: 30 mAh*2
- Earbuds: 30mAh each
- Charging Case: 300mAh
- Playing time: 4 hours
- Standby time: 25H
- $\Phi 10$ Speaker with 91db;
- $\Phi 4 \times 1.3$ Mic with 42db;

BASS
LENOVO EXTRA BASS
TECHNOLOGY

**BT 5.0 WITH
10M DISTANCE**

**IPX5
SWEAT & WATER
RESISTANT**

**4H PLAYING TIME
25H STAND BY**

**DUAL
MICROPHONE**

**TOUCH
CONTROL**

**BATTERY
300 MAH**



NECK EARPHONE

Series	Model	BT Version	Bluetooth Profiles	Gel Tips	Playtime	Stand by time	Connectivity	Sensitivity	Waterproof	Dual Connection	Connectivity
1	HE15	BT5.0,RK3266	HSP/ HFP/ AVRCP/A2DP	Y	12H	>=480H	>=10M	99dB	IPX5	Y	>=10M

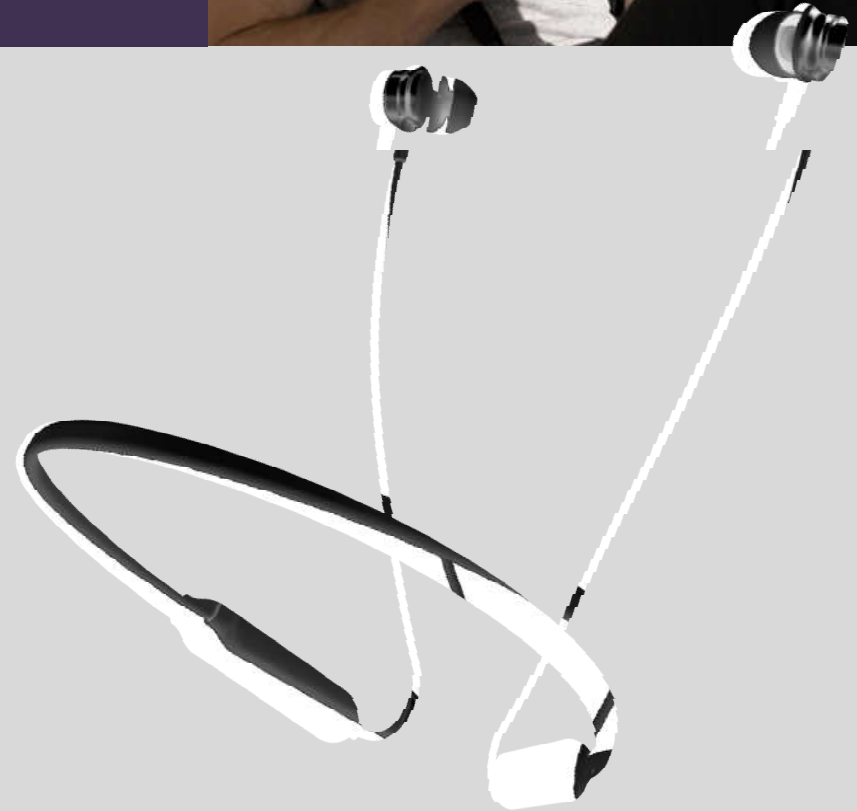
Sports BT Headset HE15

Sports bluetooth wireless earphone with immersive stereo sound and hands free calling.



Selling Points


- HD Sound with Super Extra Bass
- Excellent Bluetooth 5.0, support HSP/ HFP/ AVRCP/A2DP
- **12 hours Playing time with 240H standby time**
- Strong bluetooth connectivity with 10~20M range



HE15

SPECIFICATIONS


- Bluetooth: BK3266 with V5.0
- Bluetooth Profiles: HSP/ HFP/ AVRCP/A2DP
- Transmission Distance: $\geq 20\text{m}$
- Talking Time/Music Time: about 12H
- Charging Time: $\leq 2\text{H}$
- Standby Time: $\geq 240\text{H}$
- Battery Capacity: 3.7V/160mAh
- Frequency Range: 20Hz~20KHz
- MIC sensitivity: $42\pm 3\text{dB}$
- Magnetic absorb: YES
- Sensitivity: $99\pm 3\text{dB}$
- Cable length: $22\pm 2\text{cm}$
- Neck cable length: 300mm
- Waterproof: IPX5
- Available color: Black/White/Pink/Blue/Bronze


EXTRA BASS &
HD SOUND


VOLUME
SLIDER


BT 5.0 WITH
10-20M RANGE

IPX5
SWEAT & WATER
RESISTANT


12H PLAYING TIME
240H STAND BY


PERFECT
FIT GEL TIPS



ONEAR HEADSET

Series	Model	BT Version	Bluetooth Profiles	Design	Playback	Connectivity	Sensitivity	Waterproof	Extra Bass EQ	Foldable Design	Aux In
2020	HD116	BT5.0,RK3266	HSP/ HFP/ AVRCP/A2DP	Metal finish	24H	>=10M	100dB	IPX5	Yes	Yes	Yes

HD116

Bluetooth headphone with immersive stereo sound powerful bass and hands free calling



Selling Points

- Dual EQ, Support Extra Bass mode& Standard Mode
- Excellent Bluetooth 5.0, support HSP/ HFP/ AVRCP/A2DP
- **24 hours Playing time with 150H standby time**
- Strong Bluetooth connectivity



HD116

SPECIFICATIONS

- Bluetooth: BK3266, V5.0
- Bluetooth Profiles: HSP/ HFP/ AVRCP/A2DP
- Transmission Distance: $\geq 12\text{m}$
- Talking Time: about 12H
- Music Time: about 24H
- Charging Time: $\leq 1.5\text{H}$
- Standby Time: $\geq 150\text{H}$
- Battery Capacity: 3.7V/300mAh
- Frequency Range: 20Hz~20KHz
- MIC sensitivity: 38 \pm 3dB
- Magnetic absorb: YES
- Sensitivity: 100 \pm 3dB
- Available color: Black/Red/Blue

BASS
LENOVO EXTRA BASS
TECHNOLOGY

VOLUME CONTROL

**BT 5.0 WITH
10M DISTANCE**

IPX5
PROTECTED FROM
WATER SPLASHING

**8H PLAYING TIME
200H STAND BY**

**COLLAPSIBLE
HEADSET**

**3.5MM STEREO
AUDIO JACK**



Lenovo

GAME HEADSET

Series	Model	Design	Interface	Soft memory-protein earmuffs	3D stereo sound immersive gaming experience	Adjustable MIC 120° MIC	Hi Quality Mic	Mic Sensitivity	Gaming Headset	Virtual 7.1ch Sound	Cable
2021	HS15	Gaming	3.5mm + USB	Y	Y	Y	Y	114 ± 3dB	Y	N	2,2 mt
	HS25	Gaming	USB	Y	Y	Y	Y	115 ± 3dB	Y	Y	2.2 mt

Game Headset HS15

Rainbow colour LED light immersive experience. Adjustable headband suitable for different head shapes. Built-in high performance mic noise canceling & omnidirectional. Adjustable mic 120° mic voice pick up. Universal compatibility. Soft memory-protein earmuffs.

Selling Points

- Adjustable MIC adjustable 120° MIC to pick up your voice.
- 3D stereo sound immersive gaming experience
- Dynamic lights RGB LED effects
- Beautiful Gaming design
- Game optimized with Intelligent Noise Reduction Microphone



HS15

SPECIFICATIONS

Volume Control: Yes
Control method: Wire control
Line Length: 2.2m
interface : 3.5mm + USB
Light: RGB LED lights

SPEAKER

- Sensitivity: 114dB
- Driver Diameter: 50mm
- Number Of Drivers: 2
- Impedance: 16 Ω
- Frequency Response Range: 20 - 2000Hz
- Earcups Type: Sealed

MICROPHONE


- Diameter: 6*2,7mm
- Intelligent Noise Reduction: YES
- Impedance: 2,2 K Ω


FUTURISTIC
DESIGN


ADJUSTABLE
120° MIC

HQ
HEADPHONE &
MICROPHONE


3D STEREO
SOUND


COMFORTABLE, SOFT
MEMORY-PROTEIN
EARMUFFS


MICROPHONE &
VOLUME CONTROLS
ON CABLE


LONG AND QUALITY
CABLE 2,2 MT



Lenovo

Game Headset HS25

Rainbow colour LED light immersive experience. Adjustable headband suitable for different head shapes. Built-in high performance mic noise canceling & omnidirectional. Adjustable mic 360° mic voice pick up. Universal compatibility. Soft memory-protein earmuffs.



Selling Points

- High power speakers
- Game optimized with Intelligent Noise Reduction Microphone
- Very comfortable, soft memory-protein earmuffs
- Dynamic lights RGB LED effects
- Beautiful Gaming design
- Super vibrating sound and Virtual 7.1 surrounding
- 360° degrees high sensitivity microphone



HS25

SPECIFICATIONS

- Vocalism Principle: Dynamic
- Volume Control: Yes
- Control method: Wire control
- Connectors: USB
- Light: RGB LED lights
- Line length 2,2 mt

SPEAKER

- Surrounding sound virtual 7.1
- Sensitivity: 115dB
- Number Of Drivers: 2
- Impedance Range: up to 32 Ω
- Model Number: HS25
- Driver Diameter: 50mm
- Resistance: 20 Ω
- Frequency Response Range: 20 - 20000Hz

MICROPHONE

- Intelligent noise reduction: YES
- Microphone 360°



WIRED EARPHONE

Series	Model	Ear Plug	Built-in-Mic	Design	Stereo Headphones	Heavy Deep Bass	Driver	Earphone type	Mic Sensitivity	Foldable Design	Aux-In
2020	HF118	3,5mm	Yes	Metal finish	Yes	Yes	Full Metal Ballistic	Moving-Coil	42±3dB	Yes	Yes

Metal Earbuds Headset HF118

High definition, in-Ear, noise isolating, Heave deep Bass earphones for Apple, iPhone, iPod, iPad, Samsung Cell Phones and Smartphones



Selling Points

- Flexible Durability
- Built-in mic for calls
- Perfect stereo headphones with high quality drivers
- Natural clear and super enhanced bass sound
- full metal ballistic driver housing materials
- Heavy Deep Bass Earphones for Cell Phones & Smartphones



HF118

SPECIFICATIONS

- Model: SD510A-0632
- Earphone type: Moving-coil
- Impedance: $32 \pm 15\% \Omega$
- Sensitivity : $98 \pm 3\text{dB}$ (At 1kHz, 1mw electric power)
- Frequency response: 100~20kHz
- Rated input power: 3mW
- Maximum input power: 6mW
- Distortion: $\leq 3\%$ at 1kHz 1mw
- Mic Sensitivity: $-42 \pm 3\text{dB}$ (0dB=1V/Pa)



DEEP BASS



FULL METAL
SHELL



IN-LINE
MICROPHONE



VOLUME
SLIDER



10MM DRIVER



TANGLE FREE
CABLE





Thank YOU